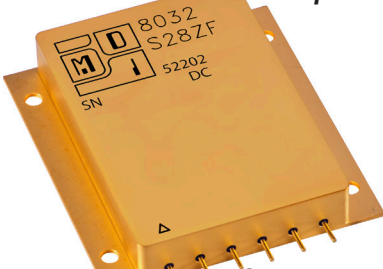


Model 8032-S28

Parallelable 100 Watt DC - DC Converter

70 Volts Satellite DC Input



50 - 90 Volts DC Input

Features:

- GaN HEMT design: Tolerant to radiation environments >100kRad(Si), no SEE for LETs >82MeV²cm²/mg.
- Magnetic coupled RF feedback design eliminates optocouplers: inherently resistant to proton, neutron displacement effects.
- Precision output voltage droop mode control: reliable current sharing in N+1 redundant applications.
- Wide input voltage range; accommodates 70V satellite input voltage transient conditions.
- Self-contained, hermetic hybrid construction: no external electronics needed to achieve stated performance or paralleling claims.
- Internal MIL-STD-461C CE03 EMI filter: meets conducted emissions standard. Works with MDI external filters in applications where additional attenuation is needed: consult factory.
- Protected for open control loop and over current fault conditions: output OV and short circuit proof.
- Inhibit "Not" function: easy open collector on-off control. Coordinates seamlessly with MDI inrush limiters and bus controllers: consult factory
- Soft Start: output voltage ramps without overshoot.
- Sync and built in test options.

Specifications

Input: 70 VDC satellite nominal

Range: 50 – 90 VDC Continuous full power operation

Isolation:

Inputs to Outputs: 10 Mohms minimum at 500 VDC

Inputs and Outputs to Case: 10 Mohms minimum at 100 VDC

Environment:

Temperature range, functional operating (Tcase): SE Grade -55°C to +125°C, derate Pout to zero at 135°C. EU, S Grades -55°C to +85°C, derate Pout to zero at 115°C.

Temperature range, storage non-operating (Tcase): -60°C to +150°C.

Shock: MIL-STD-810, Method 516.5 Procedure III (50Gs 11mS pulse, all axis)

Random Vibration: MIL-STD-883, Method 2026, Test Condition 2H (32.3G, all axis)

Acceleration: MIL-STD-883, Method 2001, Test Condition A1, Y1 direction, 500Gs

Weight: 160 grams typical

Model 8032 is a modular, parallelable, radiation tolerant hermetic hybrid designed for bulk power conversion of 70V satellite input bus voltages to nominal 28 VDC regulated outputs. Each hybrid module provides 100 watts of output power and incorporates precision droop output voltage control to make paralleling multiple modules easy and straightforward without auxiliary interconnections or components. Up to five 8032 hybrids may be parallel connected to achieve very high load current; each module shares the total within ten percent provided the interconnecting load bus construction is evenly apportioned to minimize I²R losses. Output voltage is precision trimmed at the factory to within one tenth of one volt at half load to optimize current sharing; an adjust feature is provided to accommodate custom trims in application. GaN HEMT power conversion techniques make the model 8032 highly efficient and inherently radiation tolerant for gamma and single event effect environments.

MODEL 8032-S28

Single Output

PARAMETER	CONDITION	MIN	TYP	MAX
Output voltage	Factory trim 50% load	+27.9	+28.0	+28.1
	Zero Load Droop	+28.9	+29.0	+29.1
	Full Load Droop	+26.9	+27.0	+27.1
Output Current	Vin Range 50 - 90 VDC, Full Load	—	—	3.6A
	Pout 100W	84%	87%	89%
Line Regulation	Vin Range 50 - 90 VDC	—	20mV	120mV
Load Regulation	No Load to Full Load VDC	+1	—	-1
	Droop (Vnom, about 50% Setpoint)			
Output Ripple (mVpp)	2MHz BW, Full Load	—	75	150

Pin Outs Model 8032-S28

- Pin 1 Built In Test
- Pin 2 Inhibit Not
- Pin 3 Soft Start
- Pin 4 Sync Input
- Pin 5 Input +
- Pin 6 Input Rtn
- Pin 7 Output Adjust
- Pin 8 N/C
- Pin 9 N/C
- Pin 10 Main Output +
- Pin 11 N/C
- Pin 12 Main Output Rtn

Case Dimensions

Units: inches | millimeters

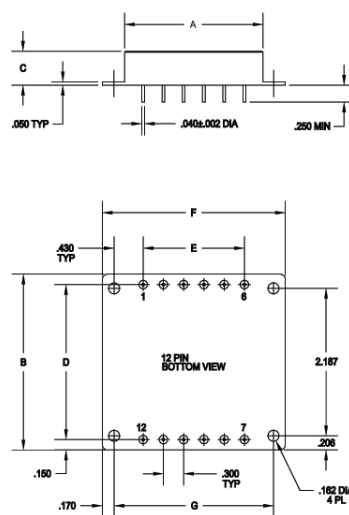
DATA: 25°C case temperature values unless otherwise noted.

TOLERANCES: ALL DIMENSIONS ±0.01, C = +0.01/-0.02; DRAWINGS IN INCHES.

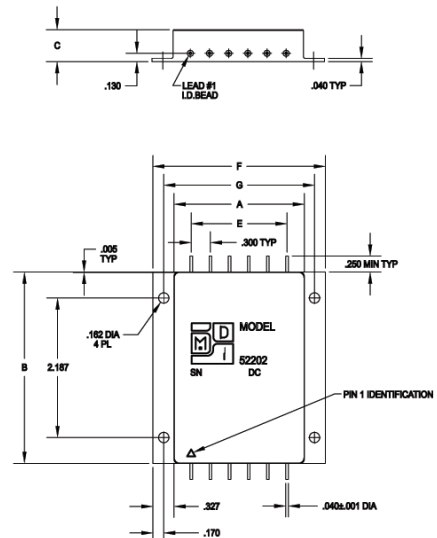
Case Style	A	B	C	D	E	F	G
7 LF	2.040 51.816	2.610 66.294	0.495 12.573	2.300 58.420	1.500 38.100	2.710 68.834	2.360 59.944
9 ZF	2.040 51.816	3.010 76.454	0.495 12.573	— —	1.500 38.100	2.710 68.834	2.360 59.944

Model No.	Case Style	Pin Count	Mounting
8032	LF	7	Seam Weld PBC Mount with Flange
8032	ZF	9	Seam Weld Chassis Mount with Flange

CASE STYLE 7



CASE STYLE 9



Modular Devices, Inc.

Power Conversion for Space and Military/Aerospace